



## T-Flex

### Description

Installing a T-Flex® coin dispenser saves 5-8 seconds off of each transaction for faster throughput and increased profits. The T-Flex coin dispenser leads the market in simplicity when it comes to training employees. It automatically calculates change based on the commands from the existing Point-of-Sale system making cashiering a thing of the past. T-Flex is perfect for many types of cash-heavy businesses such as QSRs, drive-through windows, and convenience stores.

Improve operational efficiency, spend less time counting coins, and make shift change over quick and simple with the T-Flex coin dispenser. Ideal for retail and banking applications—like Teller Assist Units.



# COIN DISPENSER

## Benefits

---

**Improve speed of service and customer throughput.** Save up to 8 seconds per cash transaction

**Eliminate bottlenecks at the till.** Serve more customers faster by improving speed of service by up to 15%

**Reduce shortages after each shift.** Safeguard against cash loss and improve accuracy

**Faster than the cashier.** Dispenses change in under 2 seconds (6 coins per second)

**High capacity.** Removable coin canister with substantial capacity—up to 200 transactions



## Specifications

---

### Coin Speed (coin/s)

- Dispenses coin in under 2 seconds

### Dimensions (H x W x D mm)

- 368.30 x 247.65 x 165.10 (with canister, without cup)

### Coin capacity

- \$111.42 USD
- \$506.30 CAD
- £254.00
- €285.00 to €410.00 Euro (3 different canisters)

### Installation

- Exterior cabinet included

### Interfaces supported

- RS232 serial port
- USB connectivity

### Power requirements

- 32 V DC, 4 Amps maximum, Power consumption 70 W

### Compliance

- CE, UL, CUL listed, IEC 60950-1, CB REPORT, FCC, ICES-003, RoHS



## Variants

### Dual Dispense Option

Innovative Dual Dispense capability dispenses coin into two separate coin cups, servicing two cashiers or bank tellers with one device, reducing equipment costs.

#### Features:

- **Coin Capacity:**
  - \$111.42 USD
  - \$506.30 CAD
  - £254 to £361 UK (4 different canisters)
  - €285 to €410 Euro (3 different canisters)
  - Worldwide currencies supported (Link to .pdf with Map)
- **Transaction Capacity:** Filled coin canister supports up to 240 cash transactions
- **Tracking:** Built-in ability to accumulate coin dispense history in non-volatile memory
- **Communications:** Controlled by two separate POS or teller stations
- **Dimensions:** 368.30 x 247.65 x 165.10 (H x W x D in mm) with canister
- **Weight:** 11.85 lbs (with canister, no coin)
- **Power:** 32 Volt DC, 4 amps max
- **External Power Supply:** 100 to 240 V AC, 50 or 60 Hz input, 32vDC output





## Accessories

---



### Calibration Strips

Calibration strips assist you in determining the amount of coins in a canister. If they are removed or become damaged, additional calibration strips can be provided.



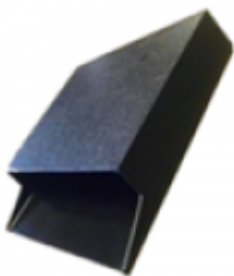
### Mounting Brackets (T-Flex)

There are a variety of mounting options for the T-Flex. Please contact sales for assistance.

### Black Overlay Cover

Present a Clean and Sleek look to your T-Flex

This new cover will improve the image of your front counter and:



- Present a clean and sleek look by concealing the dirt and grime that builds up over time
- Cover up the amount of coin in the canister, reducing the risk of theft
- Provide a place to add decals for special promotions or just reminders to the customer to take their change



## Canisters

Multiple coin canisters available dependent on your coin requirements

### Load-in-Lane Canister

The Load-in-Lane canister has all the features of our standard canister, but also allows you to manually replenish coins directly from the cash drawer, offering maximum efficiency. Available for US, Canada, and the UK, this canister design minimizes the need for manager intervention to support a total refill. It is designed for top filling a few coins at a time – not for bulk coin loading.

- **Design:** Appropriate holes in the cover allow coin to be easily top-filled manually
- **Efficient use of coin inventory:** At the cashier's convenience, coins can easily be dropped into the canister to replenish from the till.



**Easier and faster shift cash out:** By top filling the canister throughout the shift, there is less coin in the cash drawer. At the end of a shift, many customers fill the canister with all the coins in the till; then you just read the calibration strips - no need to count out all the coins

## Cups - Speed cup

Speed Cup (left only):

- Stainless steel construction
- Trap door style cup drops coin into coin
- Optimizes Drive Thru operations



## Cups - Bowl cups

Additional bowl cups (right or left)