

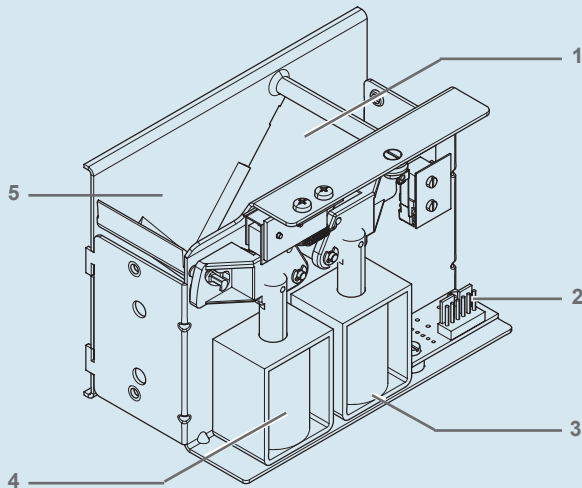
Datasheet



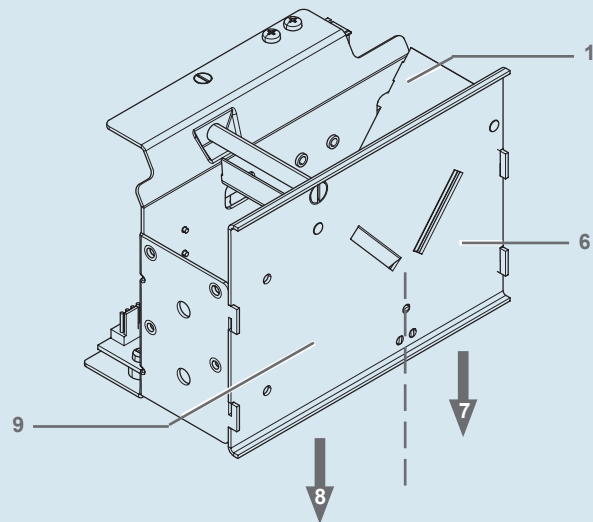
e² coin escrow

The NRI e² is not only coin escrow but also a coin deflector. It collects all the coins inserted, before directing them either into the machine cash box or into the return area for the customer.

Overview



- 1 Sorting flap
- 2 Interface – machine
- 3 Solenoid – return area
- 4 Solenoid – cash box
- 5 Coin collecting hopper



- 6 Cash box chute
- 7 Coin outlet – cash box
- 8 Return chute
- 9 Coin outlet – return area

Models

Depending on its application the e² is available in two different models:

- For a supply voltage of 12 V DC (order no. 21589)
- For a supply voltage of 24 V DC (order no. 19884)

Properties

- Robust metal housing
- Reliable coin routing due to monitored sorting flaps in cash box and return chute
- Capacity of 230 g of all circulating coins (approx. 30 50c-coins or 25 €2-coins)



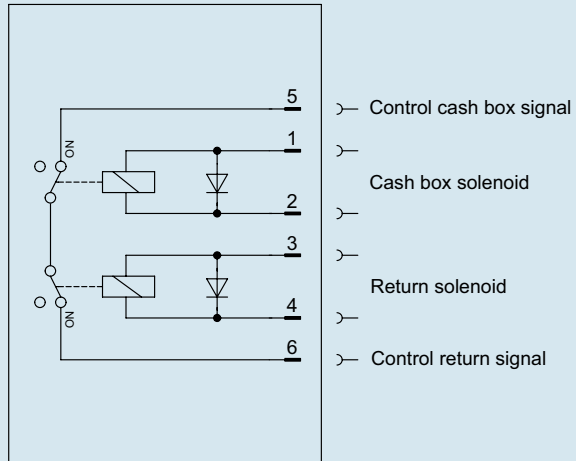
Function

The escrow and coin deflector e² is used to collect all coins inserted by the customer until the customer decides either to buy a product or to cancel the vending process. As soon as the e² receives a cash box or return signal from the machine the two sorting flaps will be controlled using solenoids in order to direct the coins via the cash box chute into the machine's cash box if a product has been selected, or via the return chute into the return area if the vending process has been cancelled.

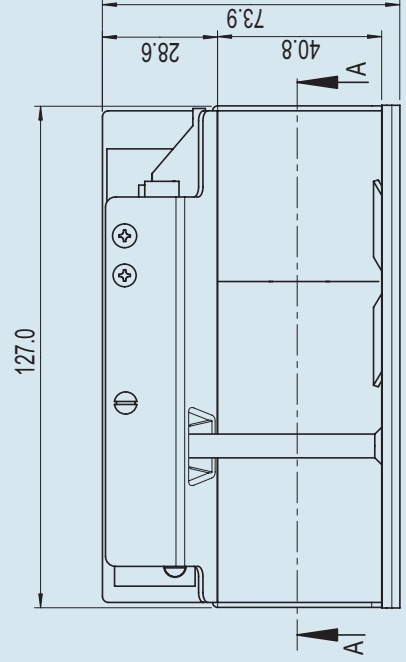
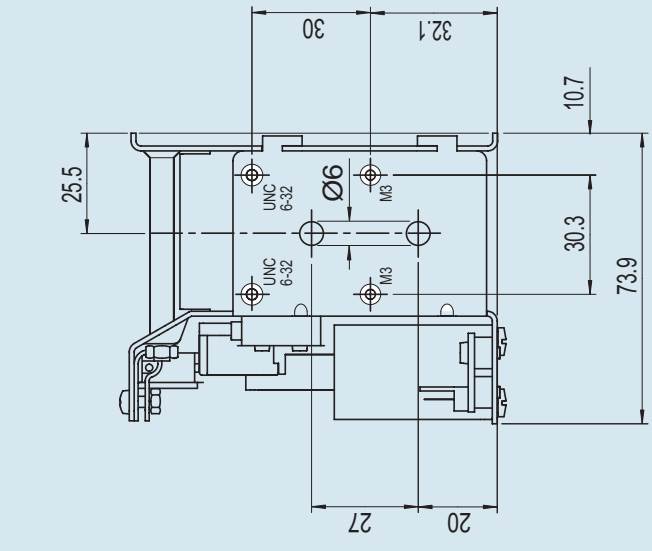
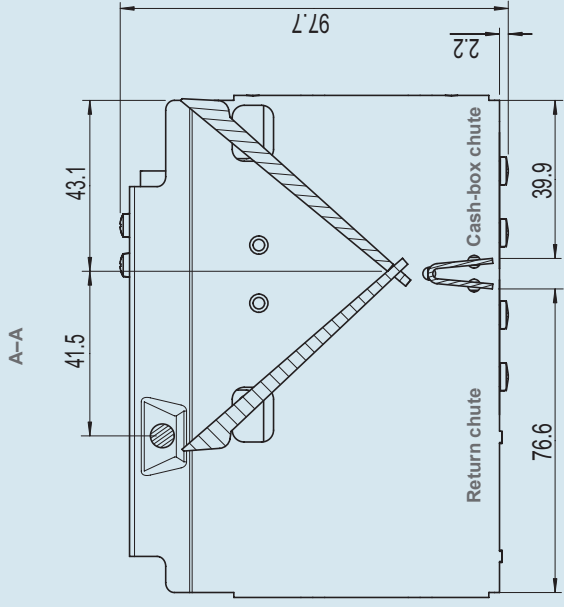
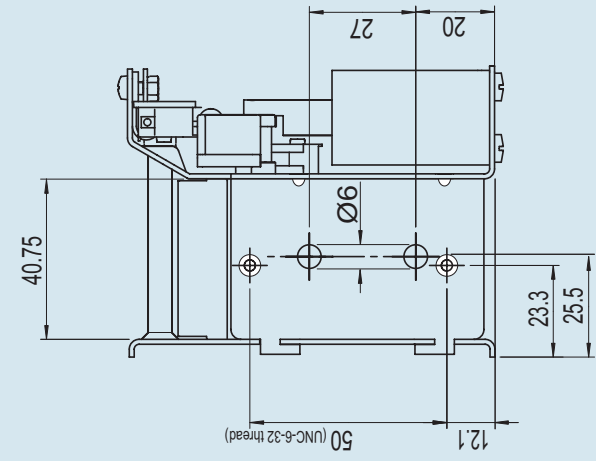
Technical data

Supply voltage	12 V DC or 24 V DC, ±10%
Current consumption	approx. 650 mA at 12 V approx. 350 mA at 24 V
Temperature range	-25 °C to +75 °C
Rel. humidity	Up to 90%
Condensation	Not permitted
Coin processing	All coins circulating Control signal, solenoids: 150 ms min. Max actuations: 500,000 Capacity: 230 g (approx. 30 0.50c-coins/25 €2-coins)
Dimensions	Height: 97.7 mm Width: 127.0 mm Depth: 73.9 mm
Mounting position	Vertical, max. deviation: ± 2°
Interface	6-pole Molex plug 75 395-6 for Molex socket 75 394-6 Pin 1 Cash box solenoid switch Pin 2 Cash box solenoid switch Pin 3 Return solenoid switch Pin 4 Return solenoid switch Pin 5 Control cash box signal (150 ms min.) Pin 6 Control return signal (150 ms min.)

Connection diagram



Mounting dimensions





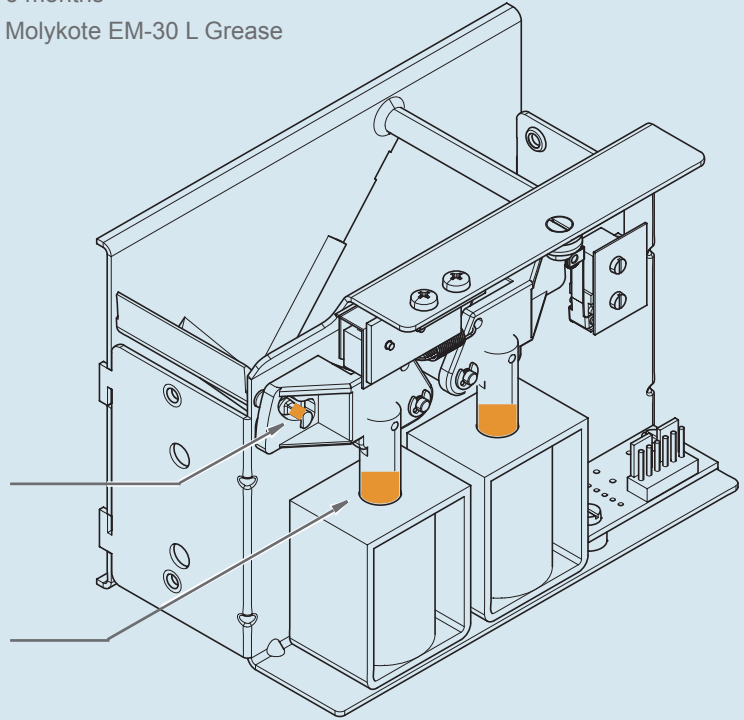
Maintenance

Cleaning interval: When visibly soiled, at least every 6 months

Lubricating interval: When no longer functional as specified and after cleaning, at least every 6 months

Lubricant: Molykote EM-30 L Grease

Lubricating points:



Please lubricate both solenoids and sorting flap pivots!

Additional technical documentation

All NRI product descriptions, e.g., for our coin validators are available as PDF at www.cranepi.com, **NRI Support**.